

## **REPORT**

### **WORKSHOP BOULDER 2010-06-29**

During workshop on Bioelectrography the following activity took place:

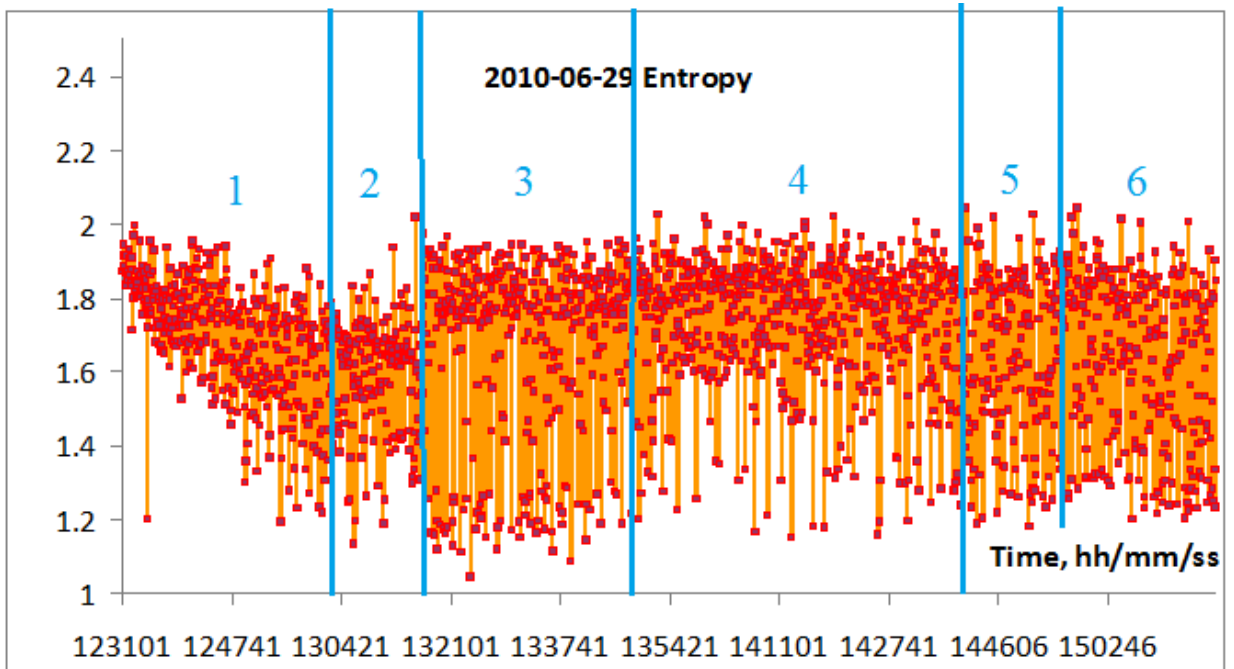
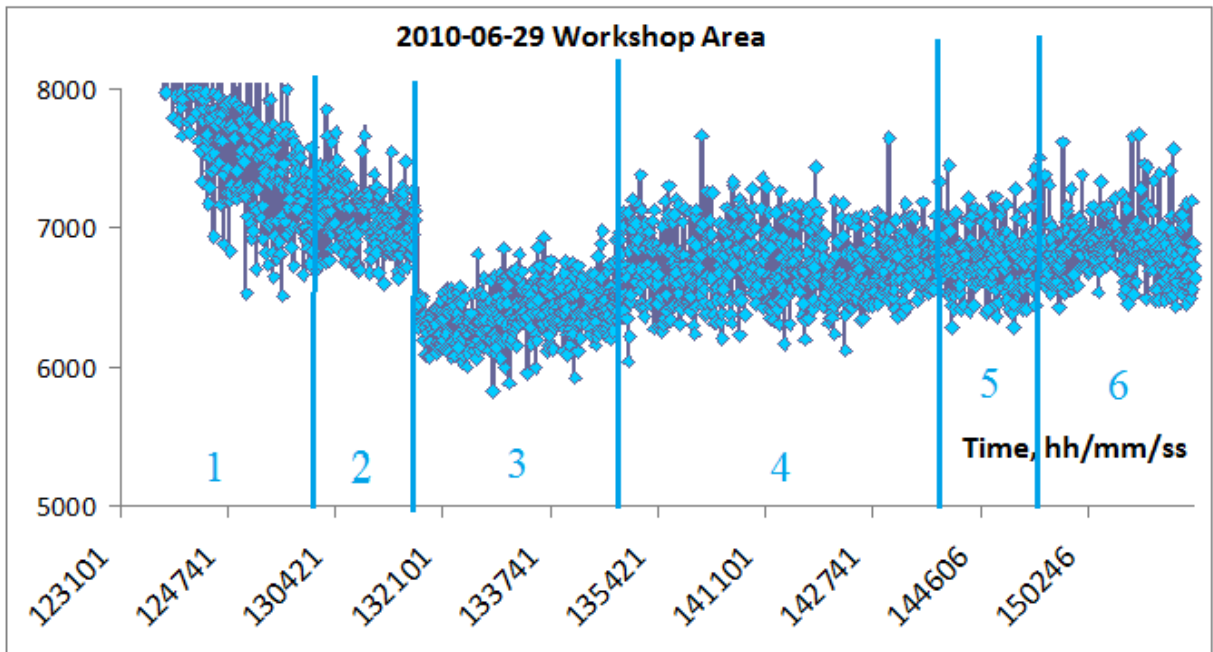
1. Second part of the workshop “EPC Sputnik” sensor was recording in an automatic mode.
2. Dough DeVito introduced The Reconnection technique to all 50 participants.
3. Dough DeVito and his assistant gave treatment to 5 volunteers. People were measured with EPC before and after treatment.
4. All participants meditated sending intentions to water measured with EPC before and after.
5. Kimba gave treatment to volunteer playing Dee-Gee-Doo.

### **Results**

Time line of Sputnik parameters are presented at fig.1. Areas are marked as follows:

1. Lunch break.
2. Beginning of the workshop.
3. Dough DeVito introduced The Reconnective Healing.
4. Workshop in progress.
5. Meditation on water.
6. Dee-Gee-Doo treatment.

As we see from the graphs, the highest reaction was recorded at the moment when Dough DeVito was introducing The Reconnective Healing. Moments of Meditation on water and Dee-Gee-Doo treatment created some reaction as well.



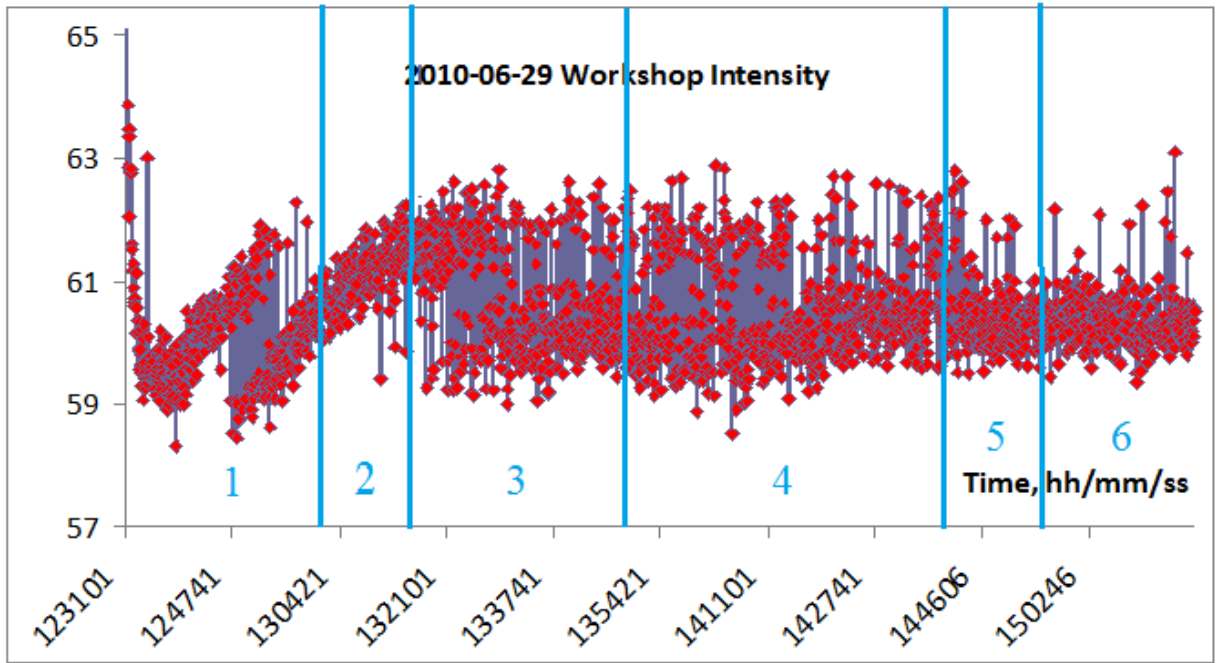


Fig.1.

# Water

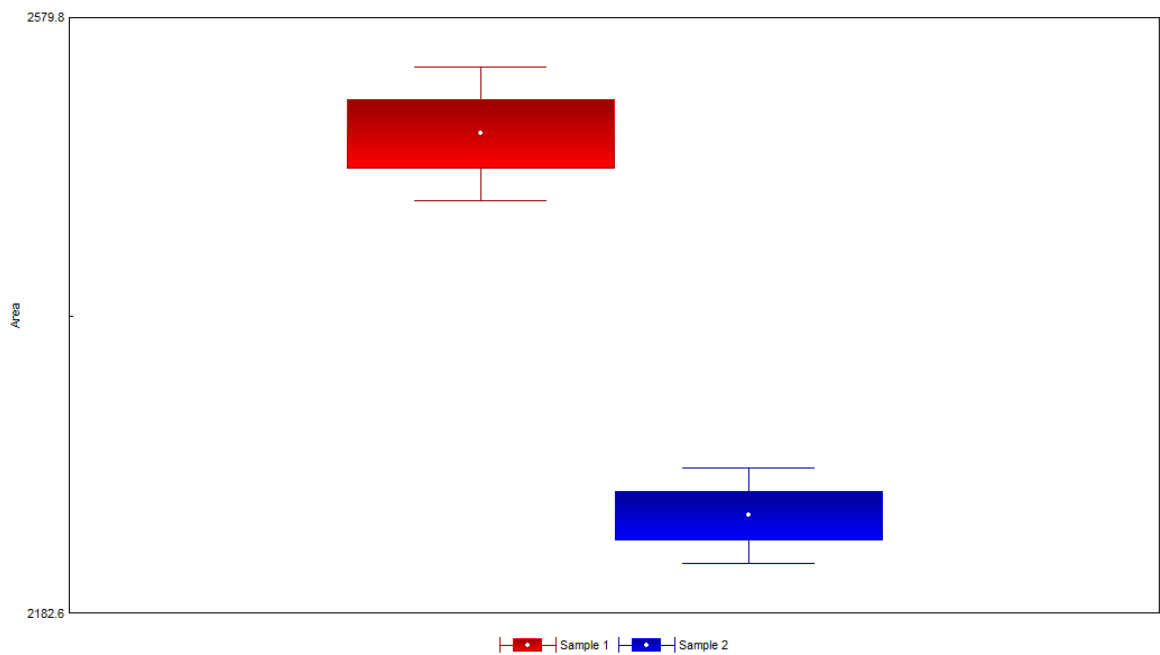
Water was placed in a standard EPC device and measured in the dynamic mode. Then all participants were asked to meditate to this water for 10 min without touching the EPC device. Immediately after this the measurement was repeated.

As we see from the presented below graphs Electrophotonic signal of water changed statistically significant.

## GDV Scientific Laboratory

Sample 1: Mean: 2502.300; Std.error: 22.666; Confidence interval: 44.435  
Sample 2: Mean: 2247.500; Std.error: 16.208; Confidence interval: 31.775

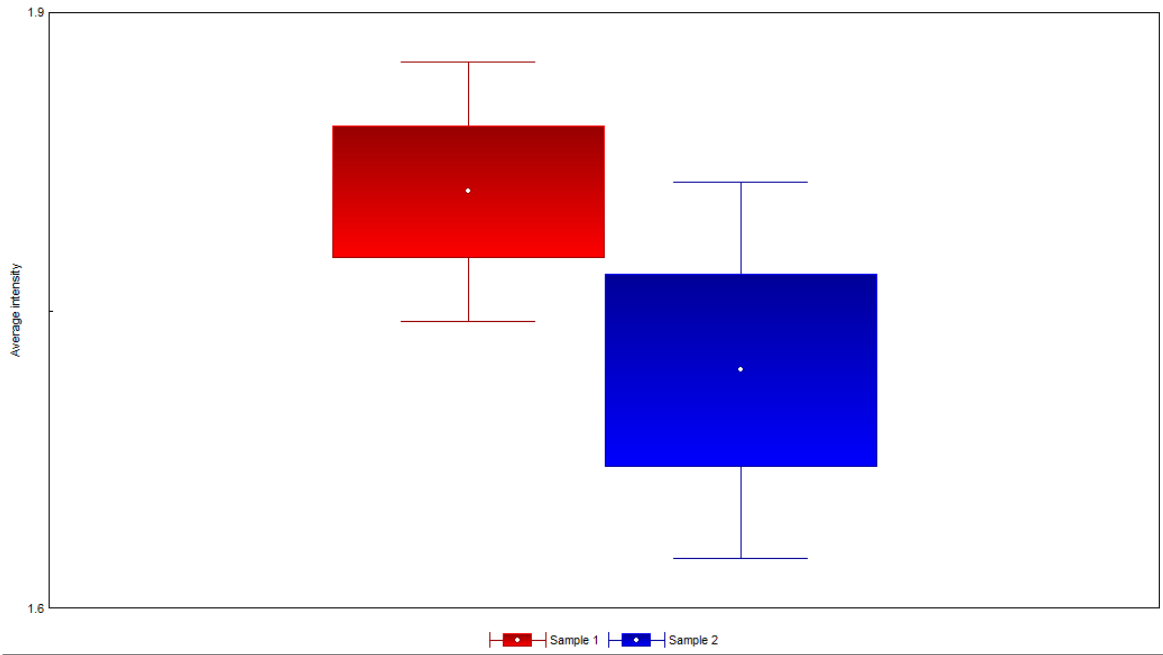
By Student test samples are statistically dissimilar;  $p = 0$



## GDV Scientific Laboratory

Sample 1: Mean: 1.815; Std.error: 0.031; Confidence interval: 0.061  
Sample 2: Mean: 1.732; Std.error: 0.045; Confidence interval: 0.088

By Student test samples have no statistically significant differences;  $p = 0$



## The Reconnective healing

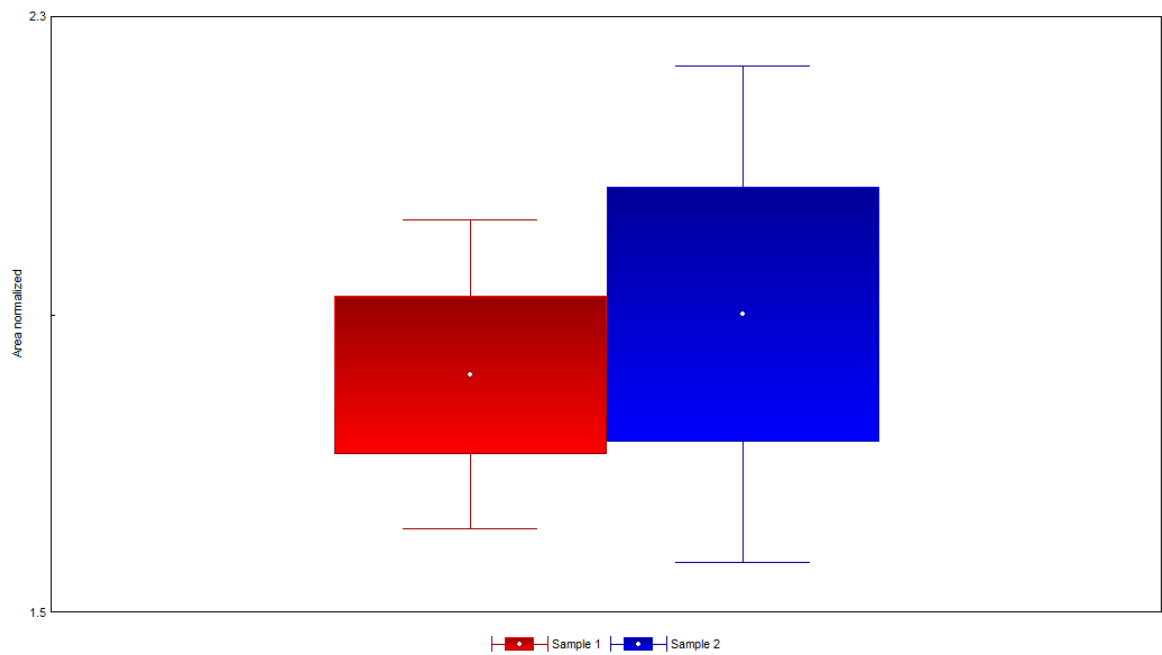
All 10 EPC-grams of fingers were processed before and after healing.  
As we see from the graphs below for all participants' energy increase and state harmonization were recorded.

### Anatoli

#### GDV Scientific Laboratory

Sample 1: Mean: 1.806; Std. error: 0.107; Confidence interval: 0.209  
Sample 2: Mean: 1.888; Std. error: 0.171; Confidence interval: 0.336

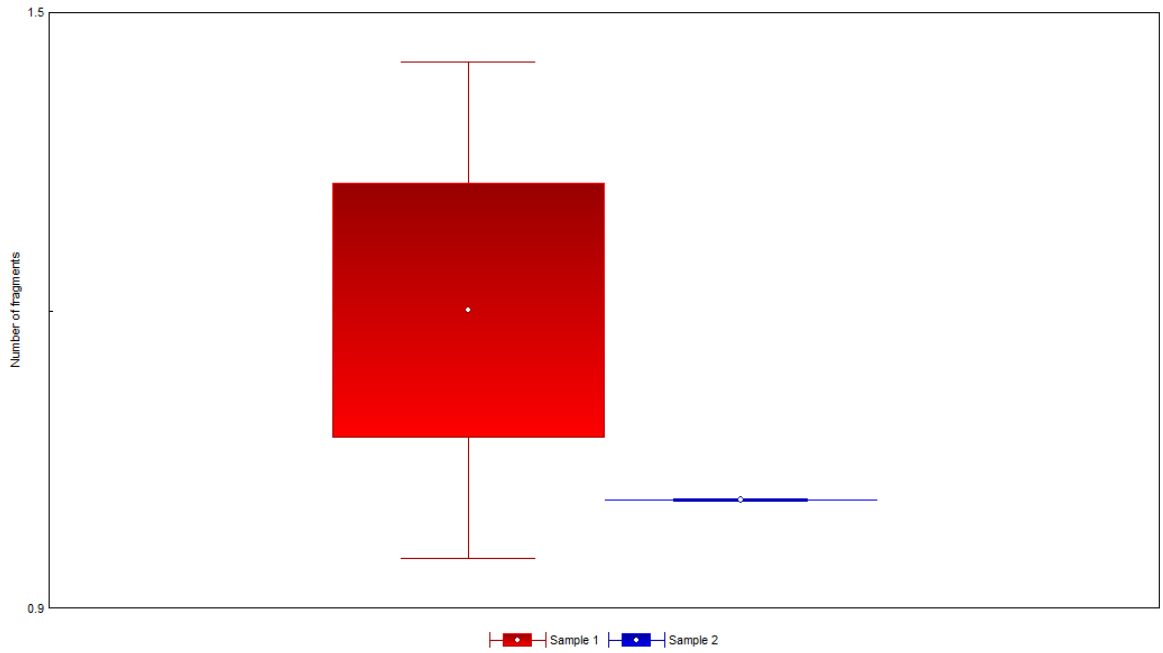
By Student test samples have no statistically significant differences;  $p = 0$



### GDV Scientific Laboratory

Sample 1: Mean: 1.200; Std.error: 0.133; Confidence interval: 0.261  
Sample 2: Mean: 1.000; Std.error: 0.000; Confidence interval: 0.000

By Student test samples have no statistically significant differences;  $p = 0$

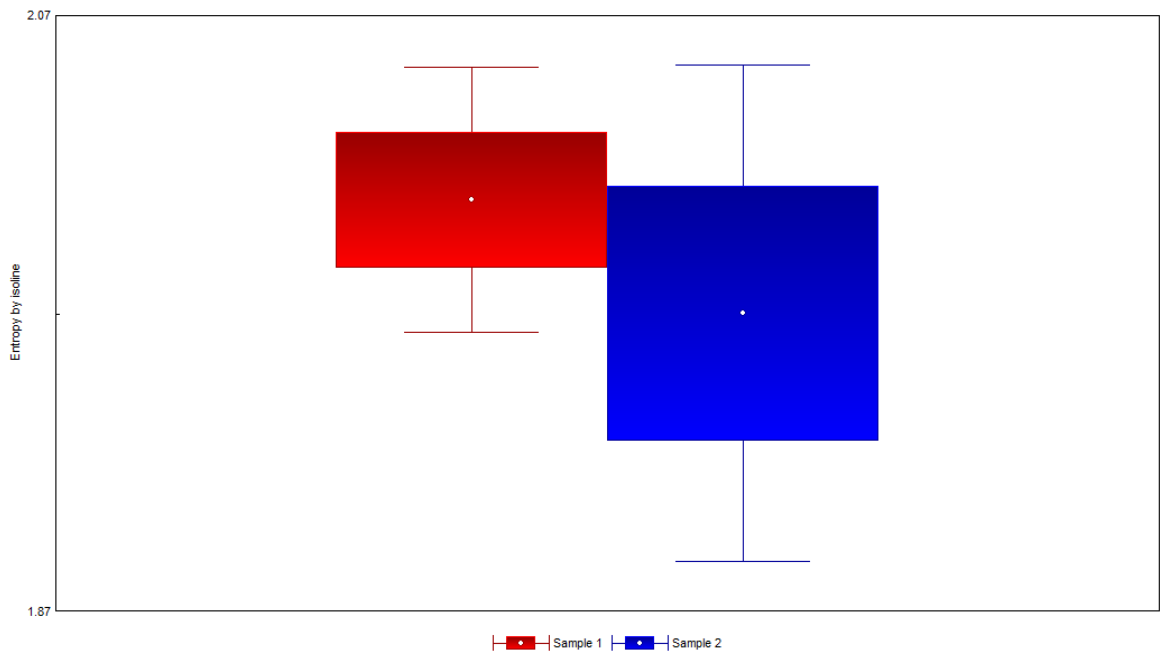


© Kirionics Technologies International

### GDV Scientific Laboratory

Sample 1: Mean: 2.010; Std.error: 0.023; Confidence interval: 0.045  
Sample 2: Mean: 1.972; Std.error: 0.043; Confidence interval: 0.084

By Student test samples have no statistically significant differences;  $p = 0$

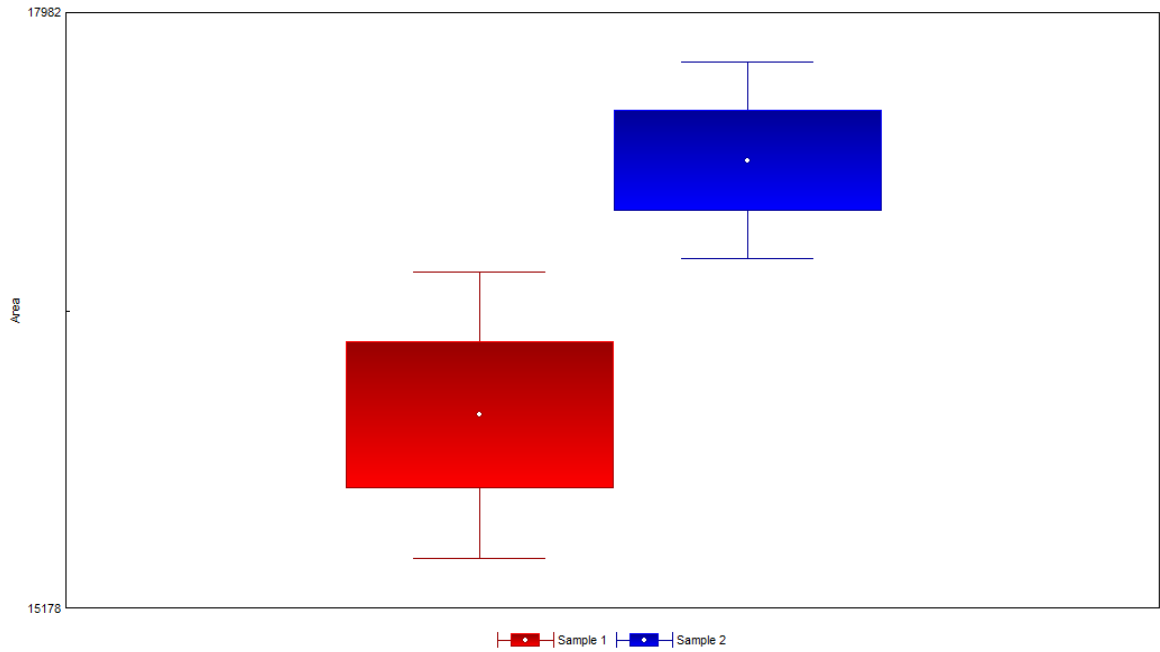


© Kirionics Technologies International

## GDV Scientific Laboratory

Sample 1: Mean: 16086.600; Std.error: 344.403; Confidence interval: 675.166  
Sample 2: Mean: 17286.400; Std.error: 235.848; Confidence interval: 462.354

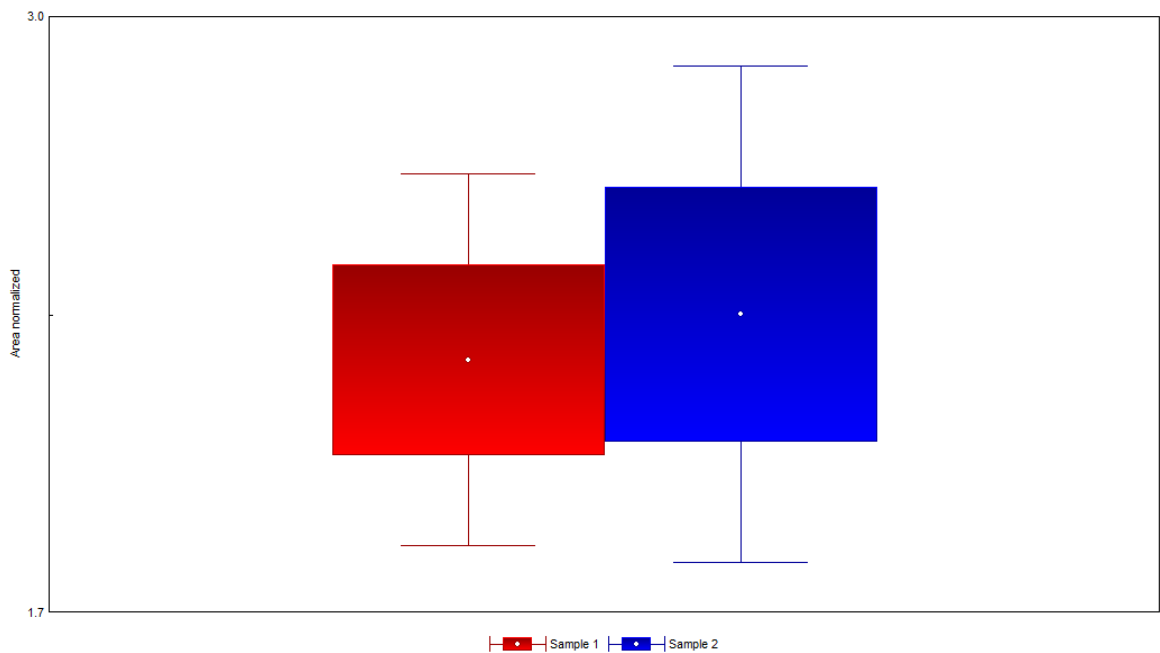
By Student test samples are statistically dissimilar;  $p = 0$



## GDV Scientific Laboratory

Sample 1: Mean: 2.261; Std.error: 0.197; Confidence interval: 0.385  
Sample 2: Mean: 2.356; Std.error: 0.262; Confidence interval: 0.514

By Student test samples have no statistically significant differences;  $p = 0$

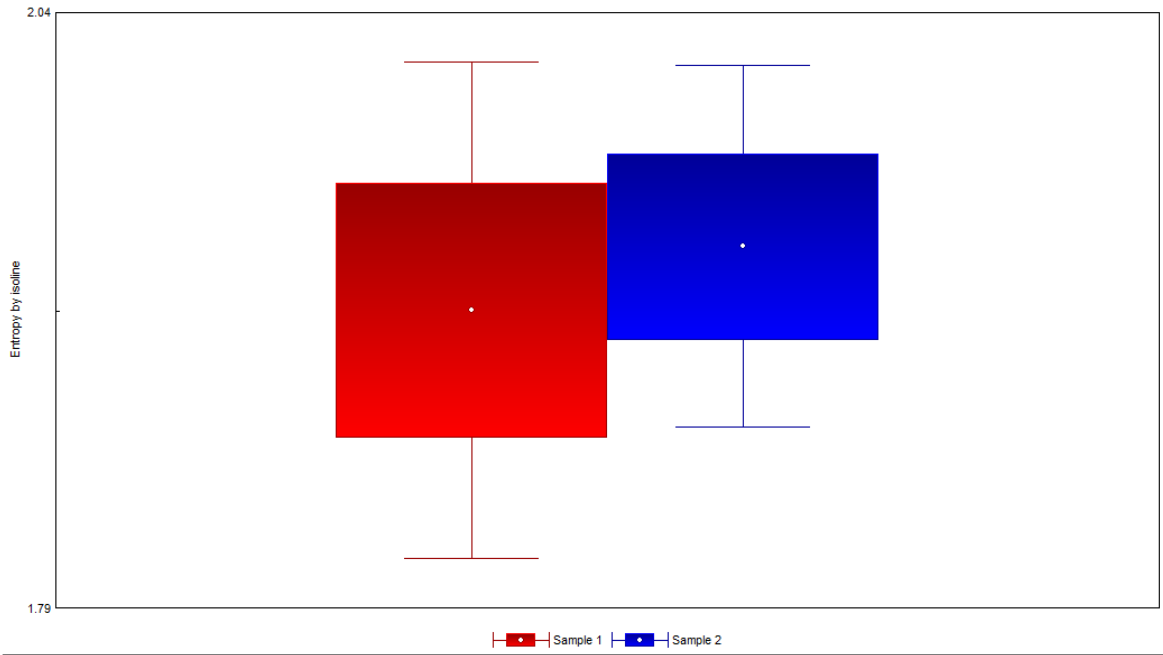




## GDV Scientific Laboratory

Sample 1: Mean: 1.918; Std.error: 0.053; Confidence interval: 0.103  
Sample 2: Mean: 1.945; Std.error: 0.038; Confidence interval: 0.075

By Student test samples have no statistically significant differences;  $p = 0$

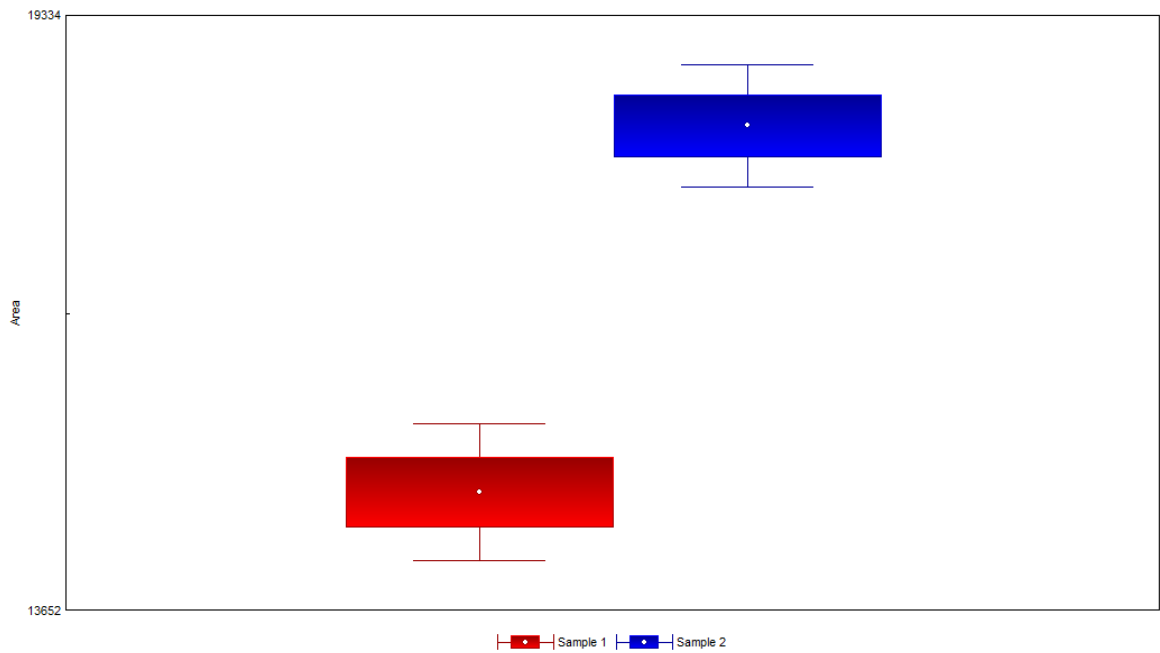


# Klee

## GDV Scientific Laboratory

Sample 1: Mean: 14778.800; Std.error: 333.453; Confidence interval: 653.699  
Sample 2: Mean: 18278.700; Std.error: 296.610; Confidence interval: 581.474

By Student test samples are statistically dissimilar;  $p = 0$

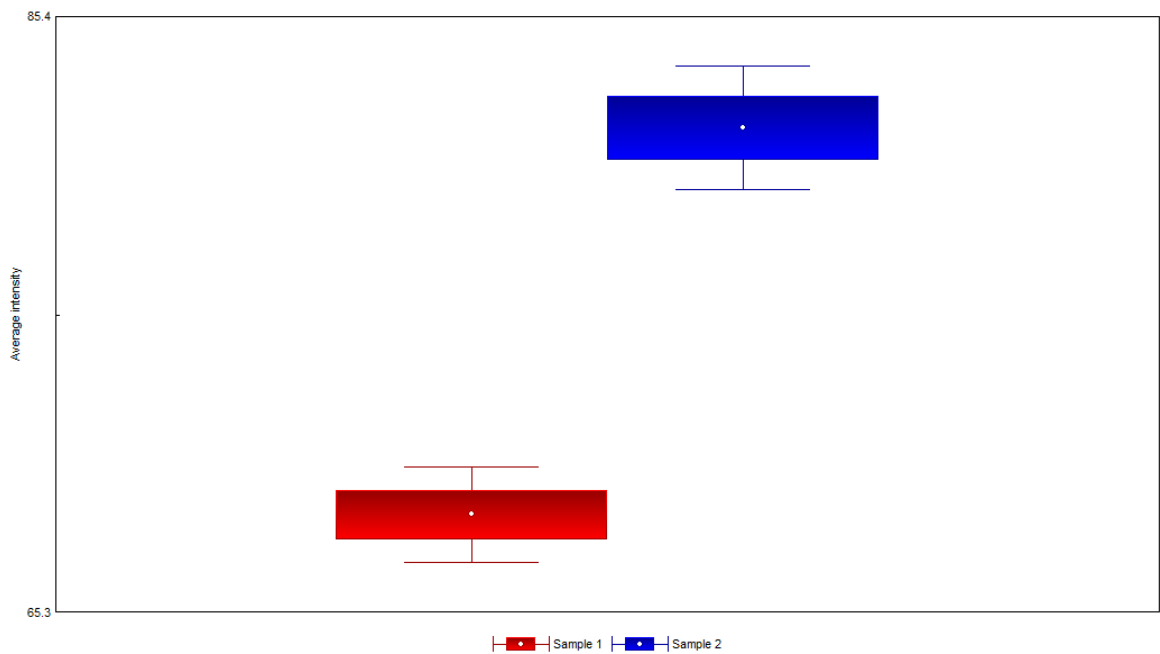


© Kirlionics Technologies International

## GDV Scientific Laboratory

Sample 1: Mean: 68.584; Std.error: 0.825; Confidence interval: 1.618  
Sample 2: Mean: 81.656; Std.error: 1.069; Confidence interval: 2.096

By Student test samples are statistically dissimilar;  $p = 0$

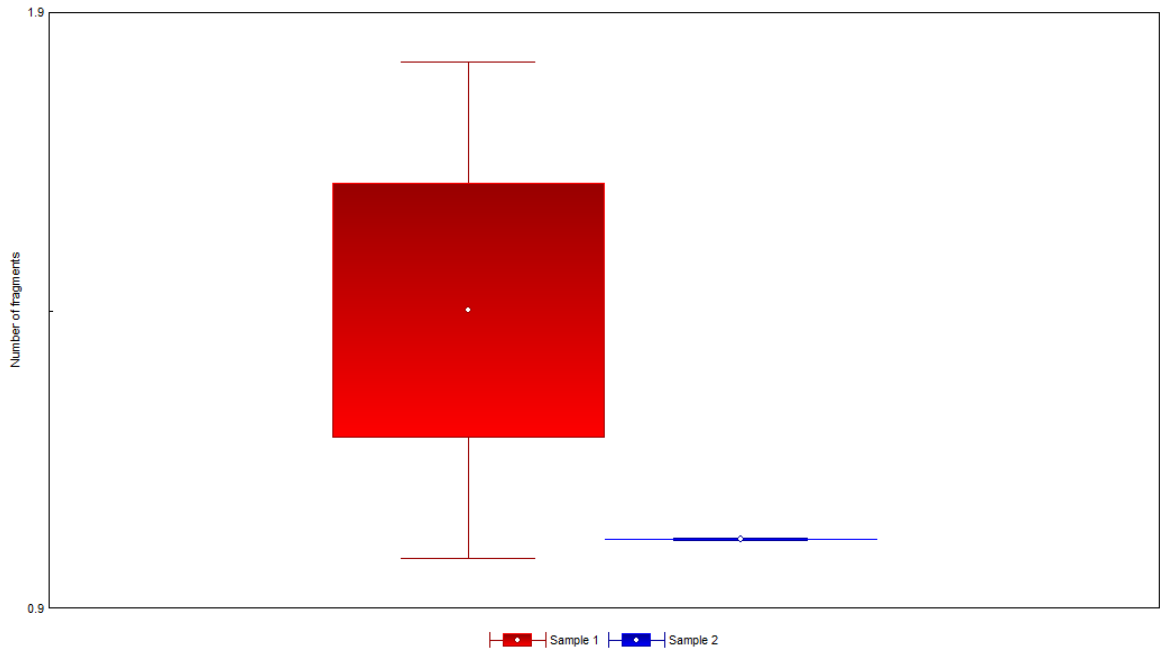


© Kirlionics Technologies International

### GDV Scientific Laboratory

Sample 1: Mean: 1.400; Std.error: 0.221; Confidence interval: 0.433  
Sample 2: Mean: 1.000; Std.error: 0.000; Confidence interval: 0.000

By Student test samples have no statistically significant differences;  $p = 0$

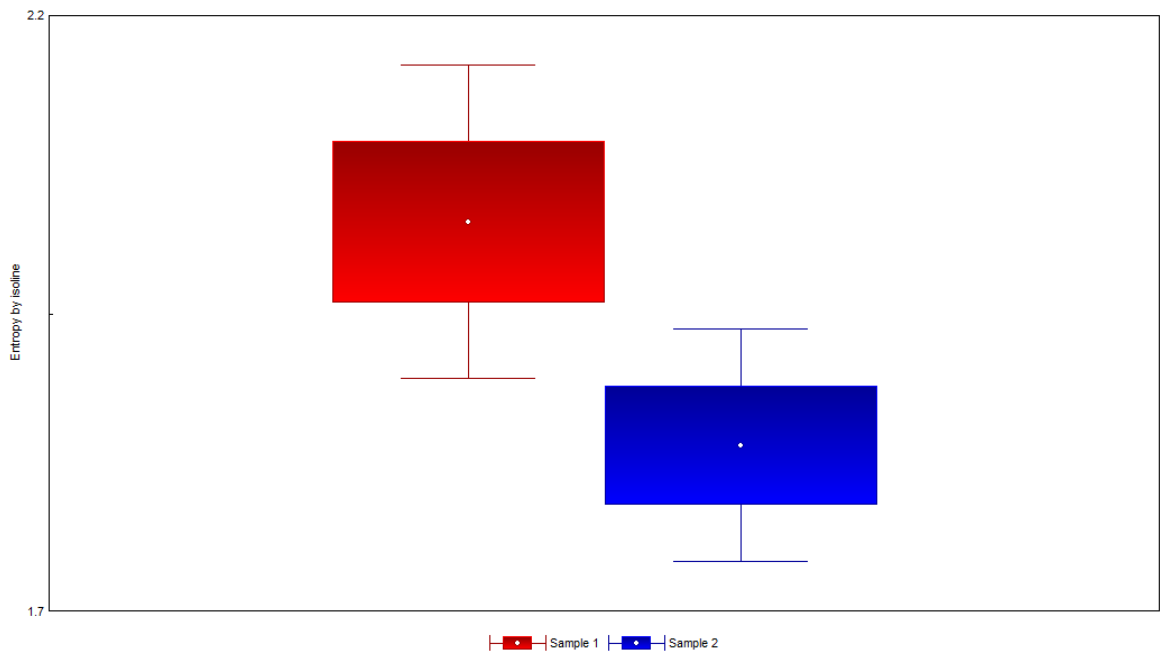


© Kirionics Technologies International

### GDV Scientific Laboratory

Sample 1: Mean: 2.053; Std.error: 0.063; Confidence interval: 0.123  
Sample 2: Mean: 1.878; Std.error: 0.047; Confidence interval: 0.091

By Student test samples are statistically dissimilar;  $p = 0$

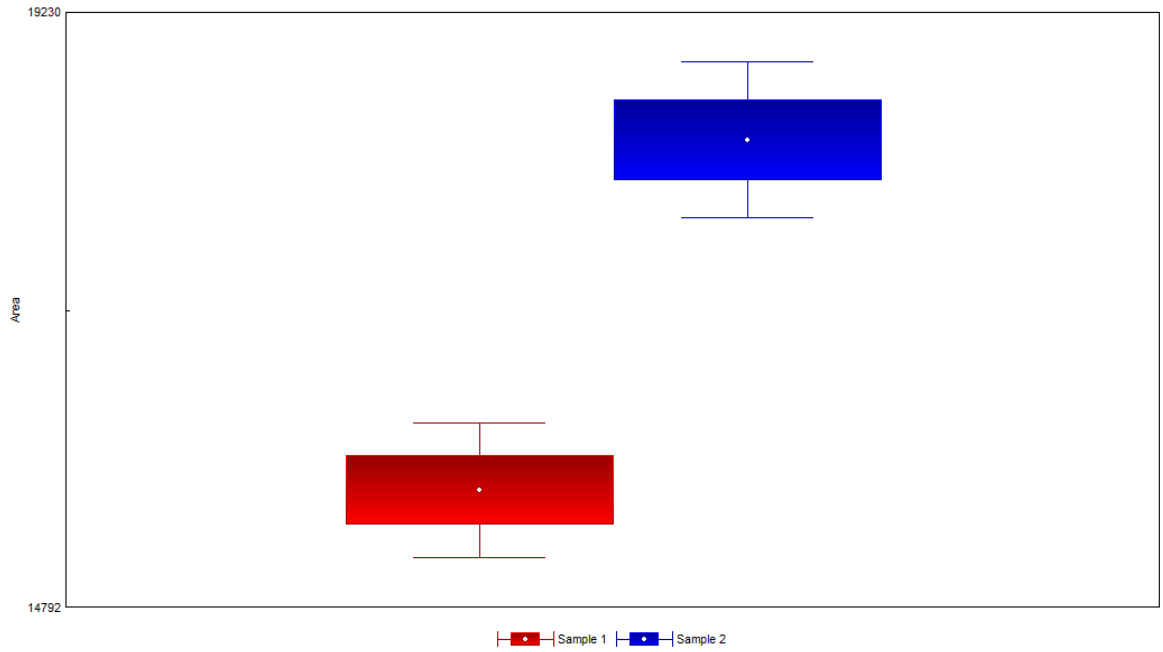


© Kirionics Technologies International

**GDV Scientific Laboratory**

Sample 1: Mean: 15664.000; Std.error: 256.095; Confidence interval: 502.047  
Sample 2: Mean: 18278.700; Std.error: 296.610; Confidence interval: 581.474

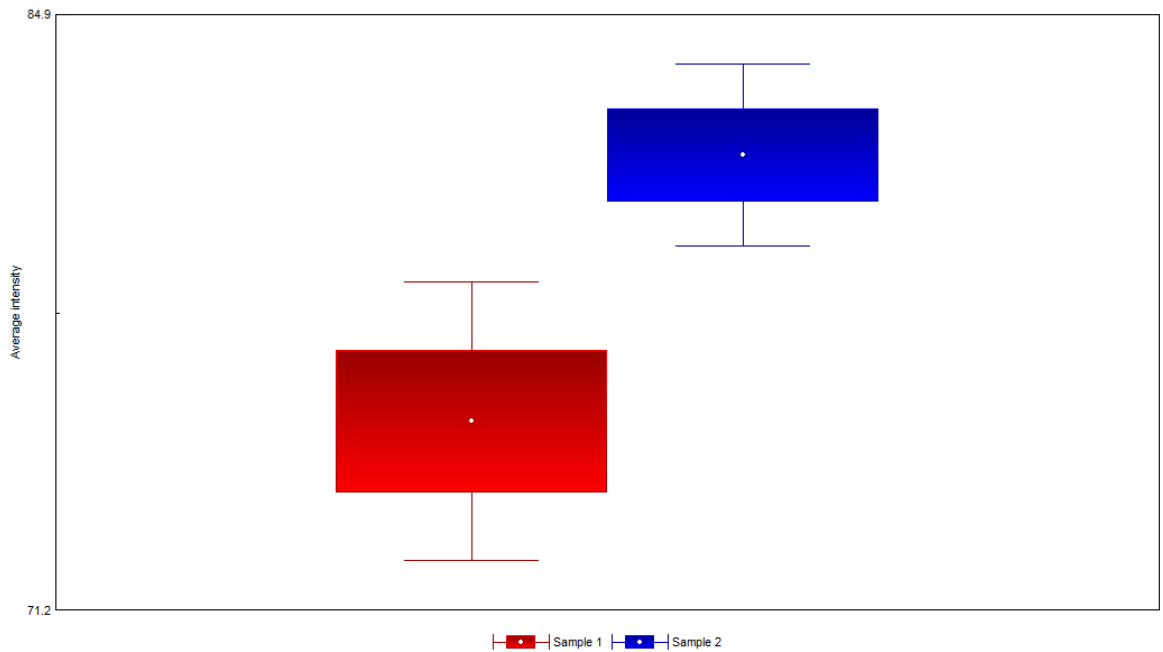
By Student test samples are statistically dissimilar;  $p = 0$



**GDV Scientific Laboratory**

Sample 1: Mean: 75.520; Std.error: 1.633; Confidence interval: 3.202  
Sample 2: Mean: 81.656; Std.error: 1.069; Confidence interval: 2.096

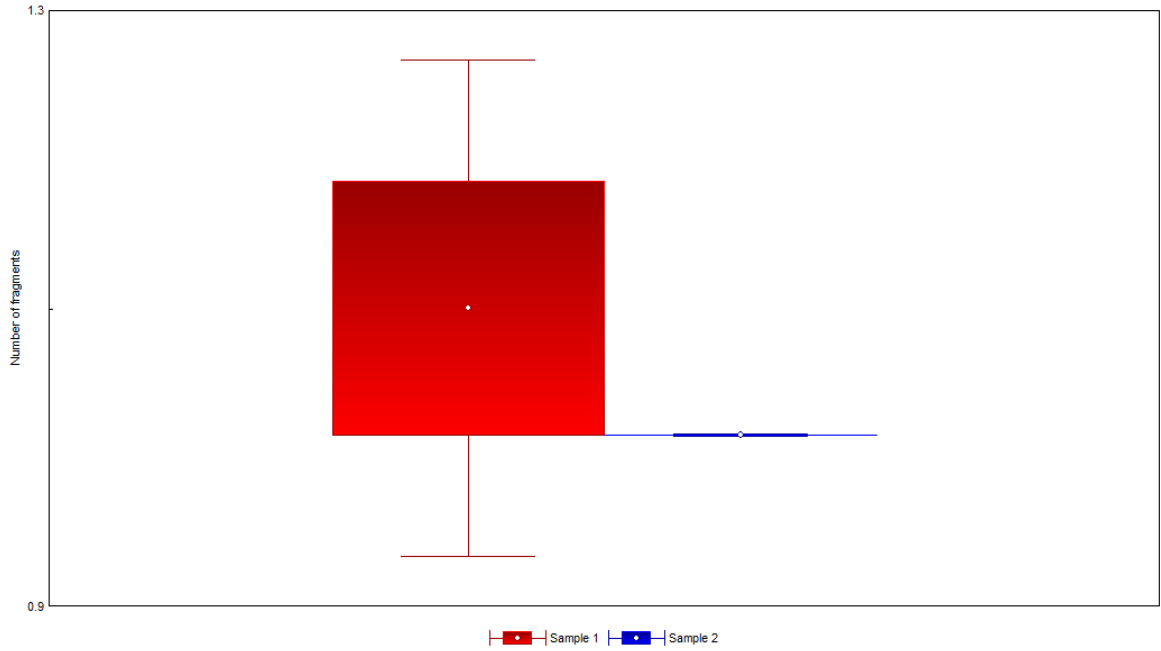
By Student test samples are statistically dissimilar;  $p = 0$



### GDV Scientific Laboratory

Sample 1: Mean: 1.100; Std.error: 0.100; Confidence interval: 0.196  
Sample 2: Mean: 1.000; Std.error: 0.000; Confidence interval: 0.000

By Student test samples have no statistically significant differences;  $p = 0$



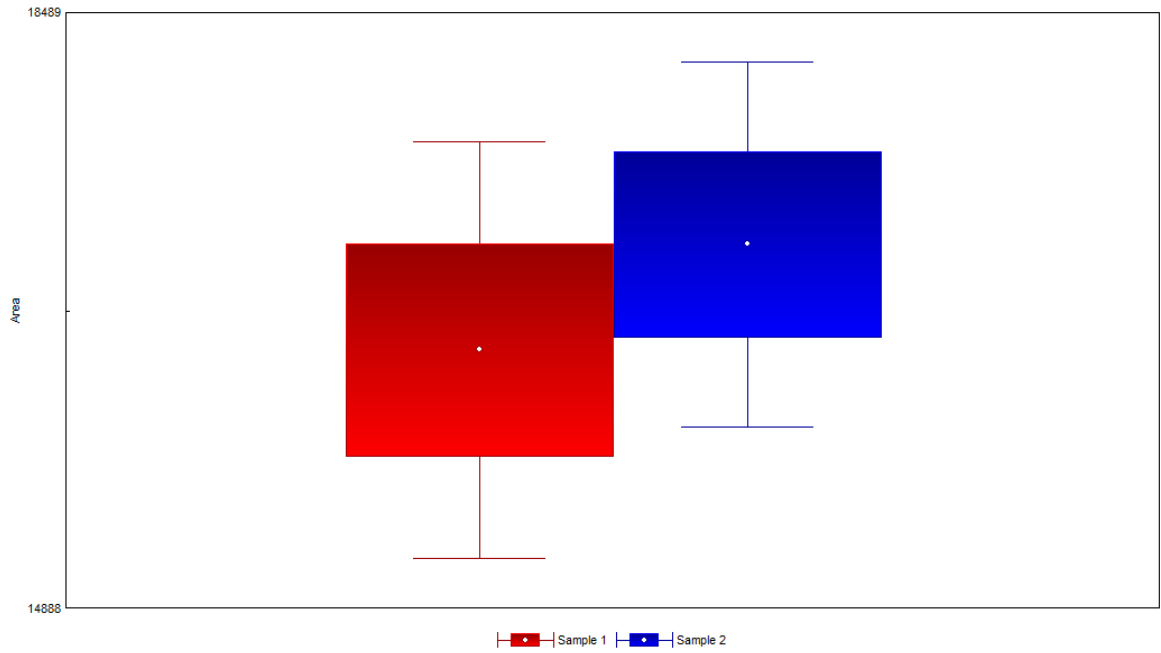
© Kirlionics Technologies International

## Montte

### GDV Scientific Laboratory

Sample 1: Mean: 16447.200; Std.error: 642.296; Confidence interval: 1259.154  
Sample 2: Mean: 17085.700; Std.error: 562.531; Confidence interval: 1102.783

By Student test samples have no statistically significant differences;  $p = 0$

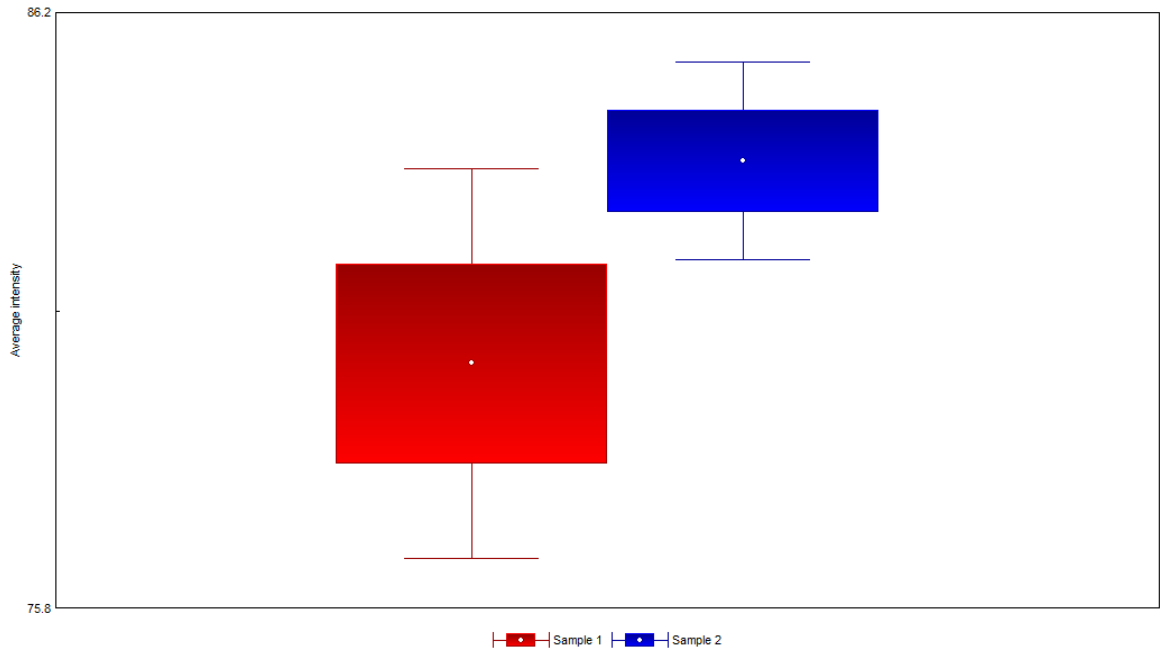


© Kirlionics Technologies International

### GDV Scientific Laboratory

Sample 1: Mean: 80.104; Std.error: 1.732; Confidence interval: 3.395  
Sample 2: Mean: 83.634; Std.error: 0.876; Confidence interval: 1.717

By Student test samples have no statistically significant differences;  $p = 0$

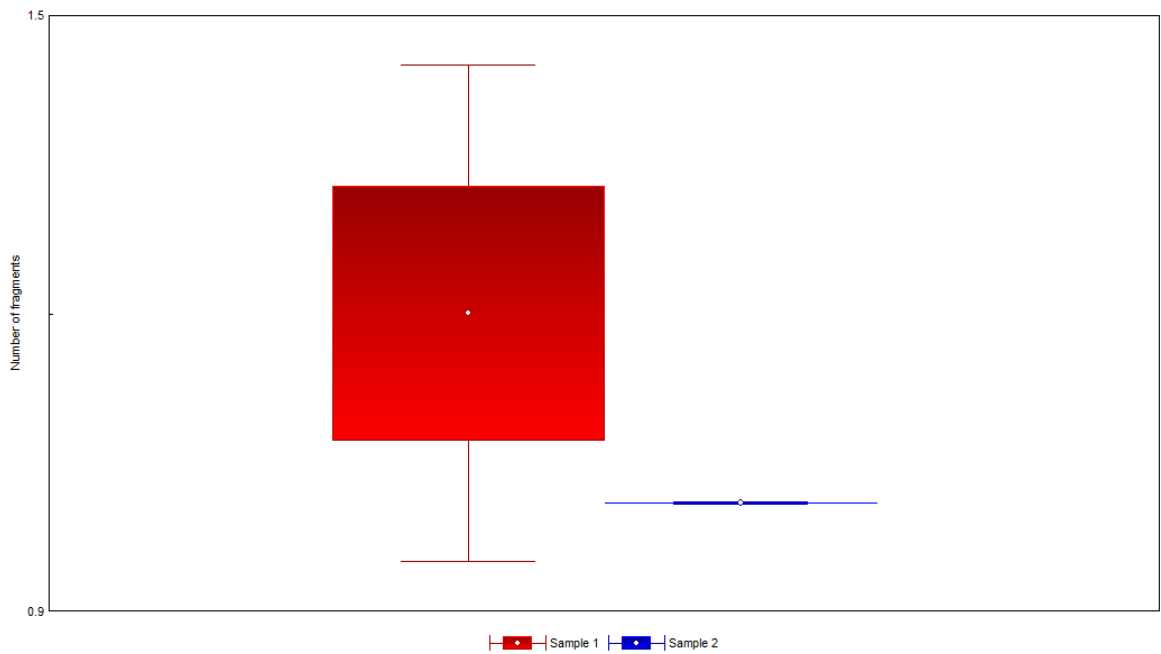


© Kirionics Technologies International

### GDV Scientific Laboratory

Sample 1: Mean: 1.200; Std.error: 0.133; Confidence interval: 0.261  
Sample 2: Mean: 1.000; Std.error: 0.000; Confidence interval: 0.000

By Student test samples have no statistically significant differences;  $p = 0$



© Kirionics Technologies International

## Dee-Gee-Doo treatment

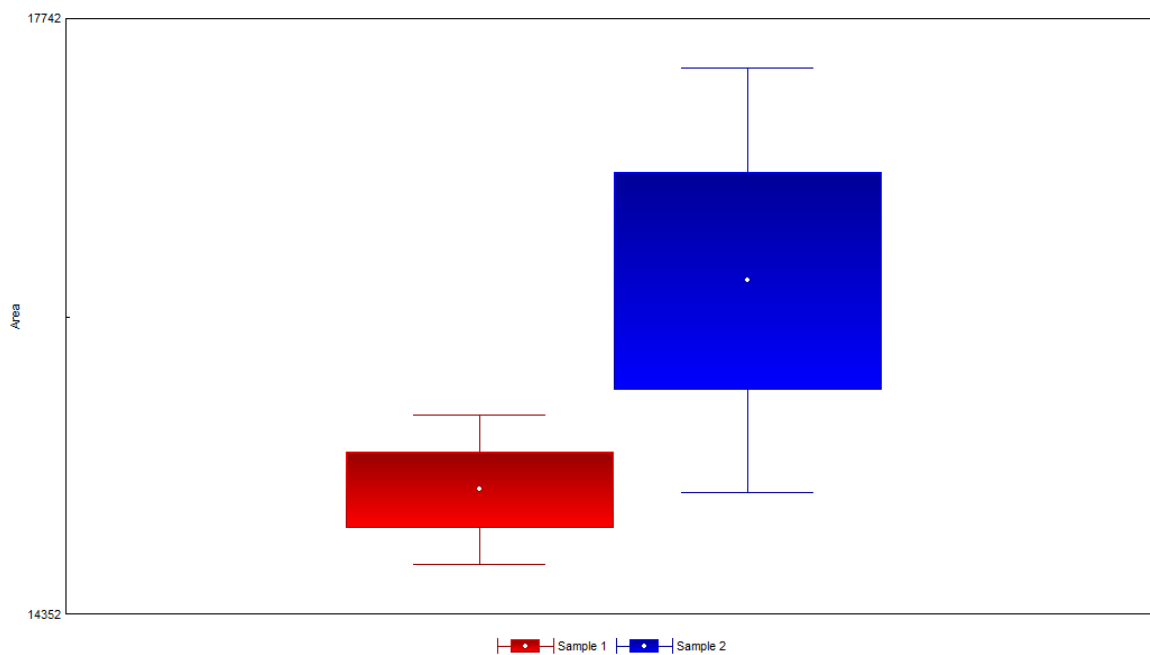
Therese

All 10 EPC-grams of fingers were processed before and after healing.  
As we see from the graphs below for all participants' energy increase and state harmonization were recorded.

### GDV Scientific Laboratory

Sample 1: Mean: 15059.600; Std. error: 216.632; Confidence interval: 424.685  
Sample 2: Mean: 16250.900; Std. error: 616.488; Confidence interval: 1208.559

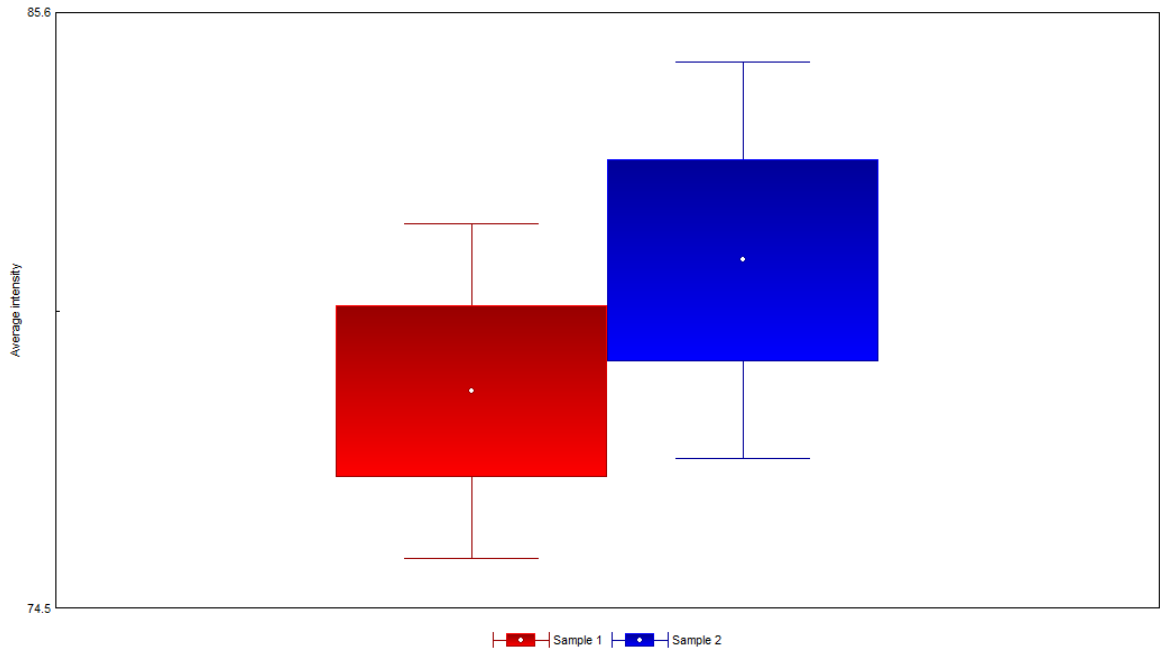
By Student test samples have no statistically significant differences;  $p = 0$



### GDV Scientific Laboratory

Sample 1: Mean: 78.578; Std.error: 1.590; Confidence interval: 3.116  
Sample 2: Mean: 81.016; Std.error: 1.882; Confidence interval: 3.690

By Student test samples have no statistically significant differences;  $p = 0$

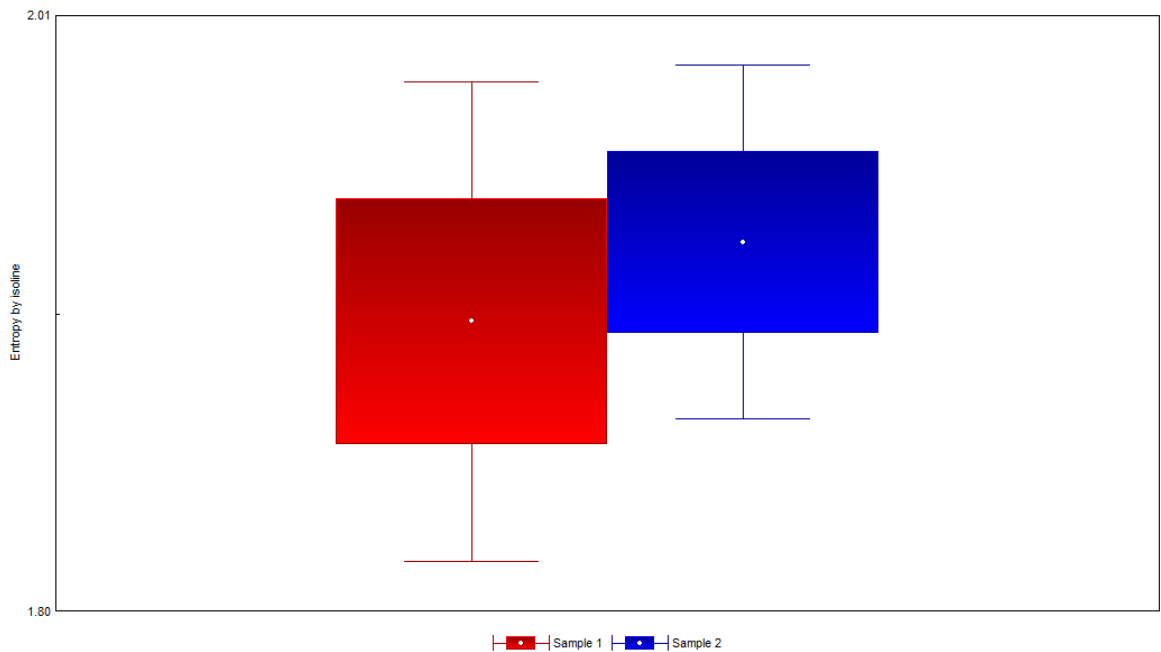


© Kirionics Technologies International

### GDV Scientific Laboratory

Sample 1: Mean: 1.902; Std.error: 0.044; Confidence interval: 0.086  
Sample 2: Mean: 1.931; Std.error: 0.032; Confidence interval: 0.063

By Student test samples have no statistically significant differences;  $p = 0$



© Kirionics Technologies International