

## 11.11.11 Sputnik records

EPI/GDV instrument with Sputnik sensor was turned on at 6.30 am and operated till 17.20 – almost 9 hours continuously. No one was present in the room. Recorded Graphs are presented at fig.1,2.

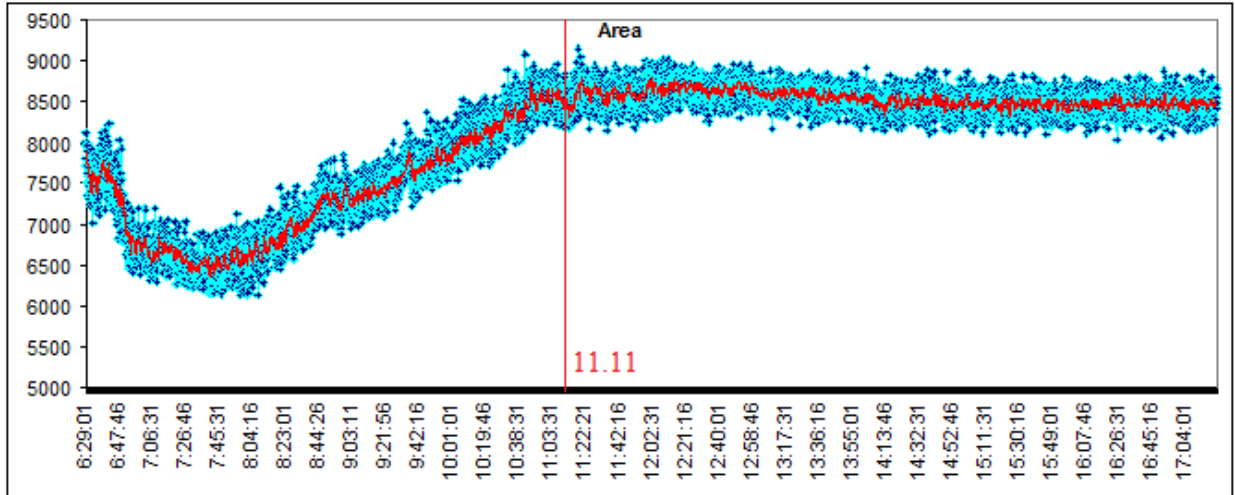


Fig.1. Time dynamics of the Amplitude of Energy in Space.

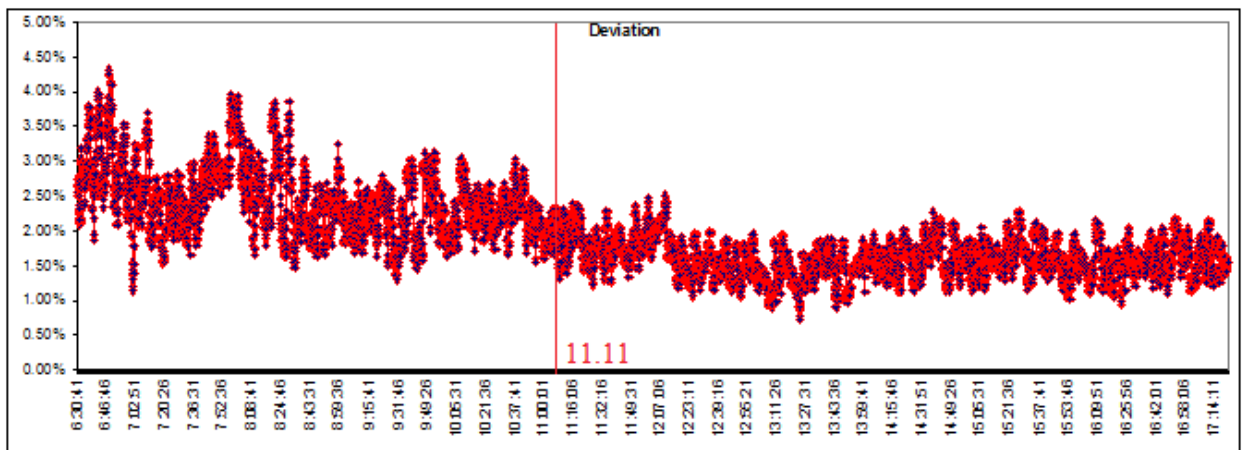


Fig.2. Time dynamics of the Energy of Space variation.

As we see from the graphs after 11.11 am local time (Moscow time) character of graphs changed dramatically: both parameters changed their dynamics and became very stable.